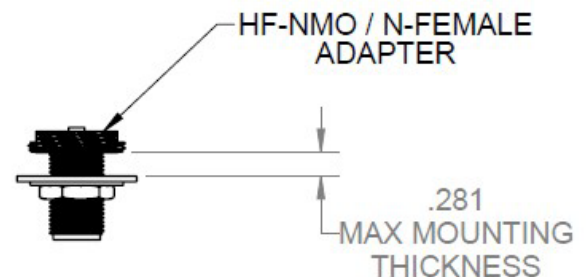
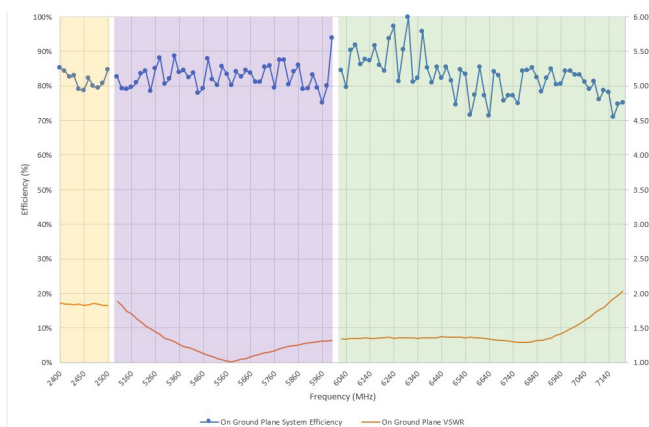


**Wi-Fi 6E Antenna Kit for Locomotive Applications (Part # 26C001)**

- Supports 2.4 GHz, 5.0 GHz and 6.0 GHz Wi-Fi Bands (802.11ax)
- High frequency NMO mount provides superior performance so you stay connected
- Meets MIL-STD 180/AREMA Environmental Standards
- Rugged, Low Profile Construction minimizes potential for collision with branches and other objects
- Radome available in black or white

**Performance Specifications**

Operating Bands (GHz)	2.4 - 2.5	5.1 - 7.2
Bandwidth (MHz)	100	2100
VSWR	<2:1	<2:1
Average Efficiency (%)	81.7%	82.7%
Average Peak Gain (dBi)	5.4	7.7
Polarization	Vertical	
Radiation Pattern	Omni-directional (Azimuth)	
Input Impedance	50 Ohms (Nominal)	
Continuous Power Rating	100 Watts	
Overall Height	1.67 inches	
Overall Diameter	1.67 inches	
Weight	Antenna: 2.71 Oz NMO Base: 2.4 Oz	
Connection	N-Type Female (Through HF-NMO Adapter)	
Radome Material	UV Stabilized PC/PBT	
Base Material	U360 H02 Brass w/Tri-Metal	
Temperature Range	-40 to 158°F	

**Efficiency & VSWR vs. Frequency****Peak Gain vs. Frequency**